

**PUZZLES & ANSWERS
MAGAZINE**

May/June 2013 * \$4.95

<http://www.pandamagazine.com>

© 2013. P&A Magazine. All rights reserved.
P&A is published on-line 6 times per year.
Single issues are \$4.95.



Taking a Trip

The map above depicts the route taken during a certain well-known movie (a screenshot from that movie appears behind the map). What's the movie, and what belongs in the white box on the right?

From the Editor

Part 2 of our dinner adventure explores the world of salts. Once you have the final answer, send it to editor@pandamagazine.com.

On the first Saturday after the last hints go out, you can check your metapuzzle answer online.

Next issue will see the return of the completists list (and I'll run both completists for 43 and 44 in the next issue).

Cheers!

*Sincerely,
Foggy Brume*

In Issue 44
Pieces of Bamboo • 3-9
The Salty Rime • 10-23
Answers to Previous Issue • 24-26
Answers to Pieces of Bamboo • 27

Issue 43 Winners
Congratulations to our first 10 correct responses!
Jeremy Conner, Chris Wales & Jeremiah Johnson
Dan Katz & Jackie Anderson
Nathan Curtis
James Douberley
Rich Bragg
Buzz Lime Pi and Friends
Mark Halpin
Brent Holman
Eric Prestemon
Jason Juang & Jon Spaulding

Best Wrong Answers

In general, solvers looked for phrases that conformed to the meta:

SOPHIE'S CHOICE INLET NIPPLE
TACTICIAN HARDHEARTED
ASTIGMATISM INTERCONNECTION

For the puzzle where the final clue was an image of a horseshoe, solvers thought they saw...

SPIDERMAN WORLD MAP
BOOMERANG TARANTULA
SNOWFLAKE AUSTRALIA
BUBBLEGUM PARAMECIA
XYLOPHONE BALD EAGLE

We will resume with listing completists for the next issue.

Editor/Constructor	Test-Solver	Friends of the Magazine
Foggy Brume	Lance Nathan	Gordon Dow Bruce Kaskel Mark Halpin Joe Cabrera

Pieces of Bamboo

Three-Way Trivia

What country borders the countries listed (not counting territories)

Easy to Navigate

1. Canada & Mexico
2. Finland & China
3. Portugal & France
4. Iraq & Afghanistan
5. Pakistan & Bangladesh

Rough Terrain

1. Greece & Syria
2. Brunei & Thailand
3. Ecuador & Venezuela
4. Dominican Republic
5. Libya & Burkina Faso

Savage Lands

1. Yakutsk & Ural
2. Winkie & Quadling (city)
3. Blefescu (technical separated by a channel)
4. Gondwana
5. Argentina & Brazil (list all 3 answers)

Acknowledgements to Ken Jennings for this quiz format

Quote Square

A proverb is hidden in the grid below. In each row and column, cross off a Tom, Dick, or Harry.

Tom _____
 Tom _____
 Tom _____
 _____ Tom
 Dick _____
 Dick _____
 Dick _____
 _____ Dick
 Harry _____
 Harry _____
 Harry _____
 _____ Harry

	1	2	3	4	5	6
1	A	A B	C	C E	K	I T
2	B C	H	O V	O	L T	T
3	D R	A	B I	B	A E	A
4	S	E L	L	H K	I	E R
5	G	A H	A	D E	E	N P
6	O P	M	I R	L	I U	U
7	C K	A	N N	D	I R	E
8	L	A L	R	N R	R	M Y
9	A	I I	C	E T	E	A E
10	D P	O	N T	T	E H	R
11	B P	N	C T	K	E N	N
12	W	O U	Y	K Y	U	S T

The Sixty-Second Test: The S Stands for Sixty

In each acronym, identify what the S stands for. How quickly can you solve all ten?

1. SCUBA _____
2. RSVP _____
3. SNAFU _____
4. USA _____
5. SEATO _____
6. ASCII _____
7. SQL _____
8. M*A*S*H _____
9. CSPAN _____
10. WASP _____
11. BASE _____
12. NASDAQ _____

Word Garden

Our word garden conceals 11 items in a mystery category. Find words by selecting a starting square and then moving the given direction and distance to get the next letter (e.g., 2L means move 2 squares to the left). Words never travel off the grid. Some additional letters will be leftover. These will form a clue to help identify the mystery category.

R	L	A	T	O	A	A	X	T	W
N	E	I	W	A	T	S	O	J	D
G	N	W	A	E	R	A	O	O	N
L	E	L	L	F	E	L	T	M	T
F	G	K	U	T	T	T	O	F	E
U	E	T	N	R	T	L	G	A	N
I	D	R	E	C	O	M	E	O	E
A	H	R	E	N	U	C	F	Z	A
B	M	Z	M	A	E	T	N	L	R
Q	A	U	A	L	F	K	R	L	O

?? 4R 3D 4L 3D

?? 3U 3R 3D 6D 2R 6U

?? 2R 1L 3U 1R 2L 3U 2R 1L

?? 2D 2D 3L 3L 3U 4U

?? 6L 3R 3D 4R 4D 9L 3U 7R

?? 2R 2D 2L 3D 2R 3D 3R 1D 5L

?? 1L 1U 1L 1U 1R 1U 1R

?? 3U 3R 3U 3L 2D 2R 2D

?? 5L 1L 7U 1R 1D 5R 3D 1R 4D

?? 2R 4U 1R 2U 3L 3D 6D

?? 2R 2U 4U 5L 4L 1D 7R

■ What's the Bnmmdbshnm?

We've taken ten items that have something in common and encrypted them with a simple substitution cipher. Can you decode each list and figure out the connection? In each list, the connection is hinted at by a musical instrument.

Trumpet

HLFA

JLIC

HIFVN

ALFZYVNFZY

VQICHIFN

BFN IZPVPMK IZ NQP HFJG

HMXVNPL

NIIN IZP'V ICZ QILZ

PSXMN

DFXZN

Clarinet

AKSKRTBMJZ

ZKPBNKZ

QKSWNPKP

AZTSY SKD

PEKBOP

PLJJBGKP

KUTS YTSYJ

MKZZTEWSP

RNZMWUK QXTSBKP

TMGJP, EJZMGJP & TZTLWP

Drum

OVCR

VJGZ

WSPQBBQAM

LVD

JVAUX

LICO

UIJBIC

NPVS

SGIAZW

LQM

Oboe

LJX

SJKNPVD

BOMQJMZ

FJKHDN

YZKHDZVO

EMKKDX

KJEMZHN

CDKGJMZT

MQKDQDL

LNMNZL WZD

Piano

MVHWXEZ

LCNDRWXLDW

ZATRDW SJXED

QWCNLHWSZNUDWT

WHVVWD TFZLDT

QZA HM TZWEXADT

QHBNVXQZLDE BZNT

GZAXLHWT

TUDDL BJTXQ

ZTTHQXZLXID ZWWZCT

Triangle

DGWIML

RIMIOOLOUPMIB

FMIRLEUKS

SKIBUCS

RLCFIPUC

FUMWD

JKFL

VKMOVOL

LOOKRDL

VMLDVLFCF

■ Cluedoku

In this Sudoku variant, first solve the clues to the left of the grid. The first letter goes in the numbered square and the answer will read in the direction given for the clue. The rest of the grid can then be completed using the normal rules for Sudoku (no letter is repeated in any row, column, or 3x3 square).

Clues

1. Square that's home to a statue of Admiral Nelson (se)
2. ____ Newton (s)
3. Like some curative foods (sw)
4. "Who is John ____?" (s)
5. Cafe au ____ (w)
6. Phyllis Diller's husband (e)
7. Gleam in one's eye (s)
8. Operated (e)
9. Terminate (s)
Sensed (se)
10. Part of a race (w)
11. Game of "it" (n)
Row (e)
12. Paintings or sculpture (nw)
Prefix in the answer to 3 (e)
13. Author Fleming (ne)
14. Walking unsteadily (n)

1				2				3
		4				5		
	6							
								7
			8					
		9			10			
	11							
			12			13	14	

Clues

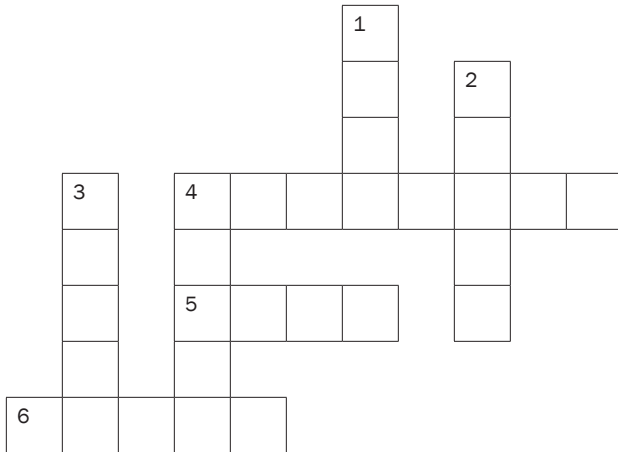
1. Revolutionary town (se)
Oaf (s)
2. False (sw)
3. Expedition (s)
4. Opposite of short (e)
5. Painter's medium (e)
6. One-time Jobs OS (s)
7. Rev the engine (w)
Informal term for money (nw)
8. ____ contendere (se)
9. "Do ____ others" (s)
10. Cattle (s)
11. Obtain (n)
12. Native American of Colorado (ne)

1								2
3								
			4					
		5				6		7
8			9					10
				11				
		12						

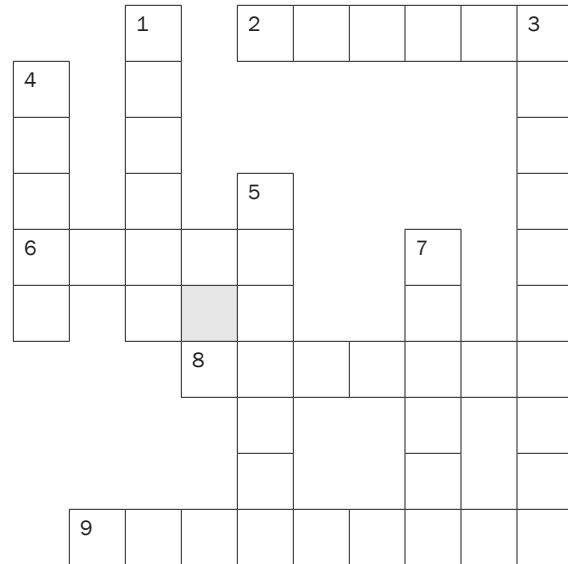
Single-Minded

In each of these crossword puzzles, you'll only need one clue. Each entry will fit that clue. For the last three puzzles, some letters are provided as help.

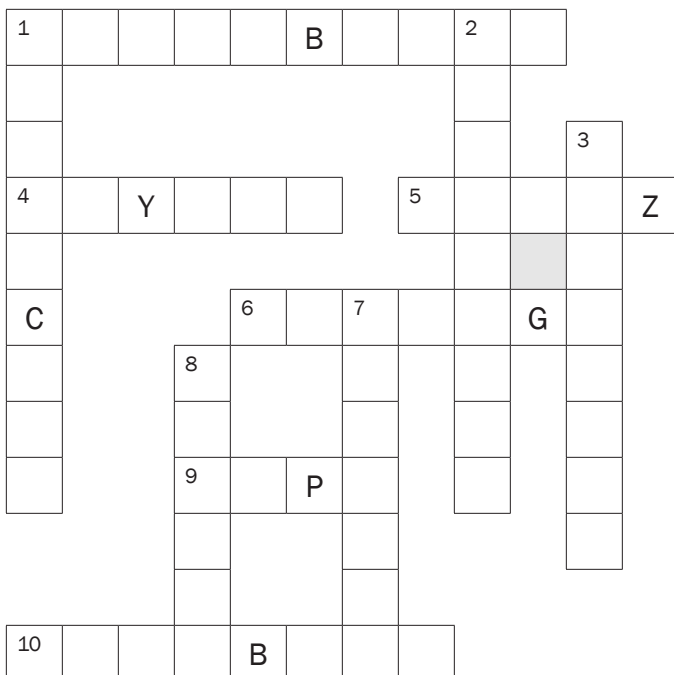
Puzzle A: 1-6 One of the deadly sins



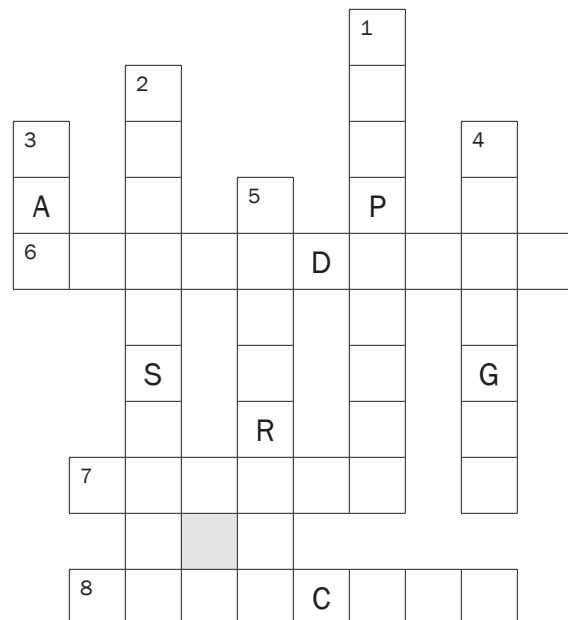
Puzzle B: 1-9 Supreme Court justice



Puzzle C: 1-10 Hitchcock film



Puzzle D: 1-8 Cold cut



I Hated, Hated, Hated, Hated This Puzzle

In honor of the passing of Roger Ebert in April, the following puzzle showcases some of his more pithy comments. Can you match the movie to the critical comment Ebert made?

*****2*****

....takes a good idea from the first film and pounds it into the ground, not to mention decapitating, electrocuting, skewering, blowing up, incinerating, drowning, and gassing it.

*****1*****

....is like taking a bus trip with someone who has needed a bath for a long time. It's not merely bad; it's unpleasant in a hostile way.

*****3*****

This is an ideal first movie for infants, who can enjoy the bright colors on the screen and wave their tiny hands to the music.

*****4*****

....is like an alarm that goes off while nobody is in the room. It does its job and stops, and nobody cares.

*****5*****

To make a film this awful, you have to have enormous ambition and confidence, and dream big dreams.

*****6*****

This movie doesn't scrape the bottom of the barrel. This movie isn't the bottom of the barrel. This movie isn't below the bottom of the barrel. This movie doesn't deserve to be mentioned in the same sentence with barrels.

*****8*****

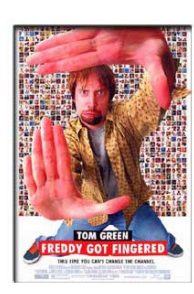
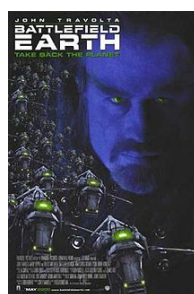
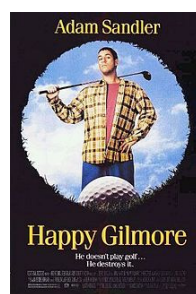
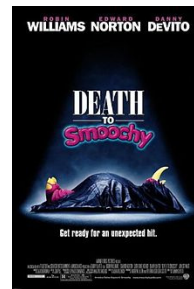
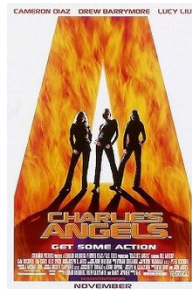
...a two-hour movie squeezed into three hours, about how the Japanese staged a surprised attack on an American love triangle.

*****7*****

....tells the story of a violent sociopath. Since it's about golf, that makes it a comedy.

*****9*****

....eye candy for the blind.



Around the World

This is our ship, except when it isn't.

1F	2K		3P	4A	5E		6Q	7N	8E	9E	10L		11G	12S	13P	14V	15F	16O	17E	18I		19U	20D
21I	22T		23A	24O	25H		26R	27N	28E	29F		30H	31Q	32U	33J	34F		35L	36G	37H		38I	39G
40P	41L		42M	43R	44A	45H	46E	47Q	48D		49F	50I	51T	52J	53Q	54O	55U		56G	57D	58C	59T	60H
61Q	62J	63S	64L	65R	66B		67J	68M	69H	70B		71O	72V	73K	74N		75R	76J	77C	78T	79F	80M	81G
82Q	83H	84D	85I	86U		87S	88U		89K	90Q	91L		92H	93V	94K	95T	96B	97P		98I	99S	100J	101H
102K		103Q	104J	105D	106P		107Q	108E	109J	110T	111C		112Q	113G	114S	115H		116S	117T	118L	119D	120S	
121S	122F	123D		124M	125H	126Q	127C		128G	129M	130Q	131E	132H	133S	134T	135N	136R		137J	138C	139P	140S	
141U	142J	143F	144D		145A	146E	147T		148J	149H	150G	151B		152H	153J	154S	155F	156G	157E	158Q	159T		160E
161S	162Q		163A	164Q	165G		166V	167U	168Q	169A	170O												

- | | |
|--|--|
| <p>A. Our national currency

 163 4 169 23 44 145</p> <p>B. One-_____

 66 70 96 151</p> <p>C. It's often paired with justice and our way

 127 58 77 111 138</p> <p>D. Our total population

 20 105 57 48 144 84 123 119</p> <p>E. Our current president (2 wds)

 46 8 28 17 5 131 157 146 9 160 108</p> <p>F. Our 16th state (in order of entry)

 155 29 49 1 79 34 15 122 143</p> <p>G. Our capital city

 56 11 36 81 165 150 39 156 128 113</p> <p>H. What our leader might wear to a nice dinner (2 wds, hyph.)

 45 101 115 69 92 60 83 37 30 149</p> <p>I. They neighbor us to the north

 38 21 50 85 18 98</p> <p>J. One of our former speakers of the house (2 wds)

 76 33 137 67 100 52 153 109 148 104 62 142</p> <p>K. Things that are cast

 73 2 102 94 89</p> | <p>L. Our independence day (use Roman numerals)

 41 35 10 91 64 118</p> <p>M. Mountain range in the northeast part of our country

 68 42 124 129 80</p> <p>N. Our Karl of politics and scandal

 7 27 135 74</p> <p>O. Something ghosts do

 71 170 24 54 16</p> <p>P. Last word in the title of our national anthem

 13 40 3 139 97 106</p> <p>Q. Winners in November (2 wds)

 61 31 47 6 82 107 162</p> <p>R. Number of five-pointed stars on our flag

 53 103 112 168 130 90 164 158 126</p> <p>S. An important document for us

 12 87 120 116 63 99 140 114 121 154 133 161</p> <p>T. "Nations that govern _____" (a/k/a are independent)

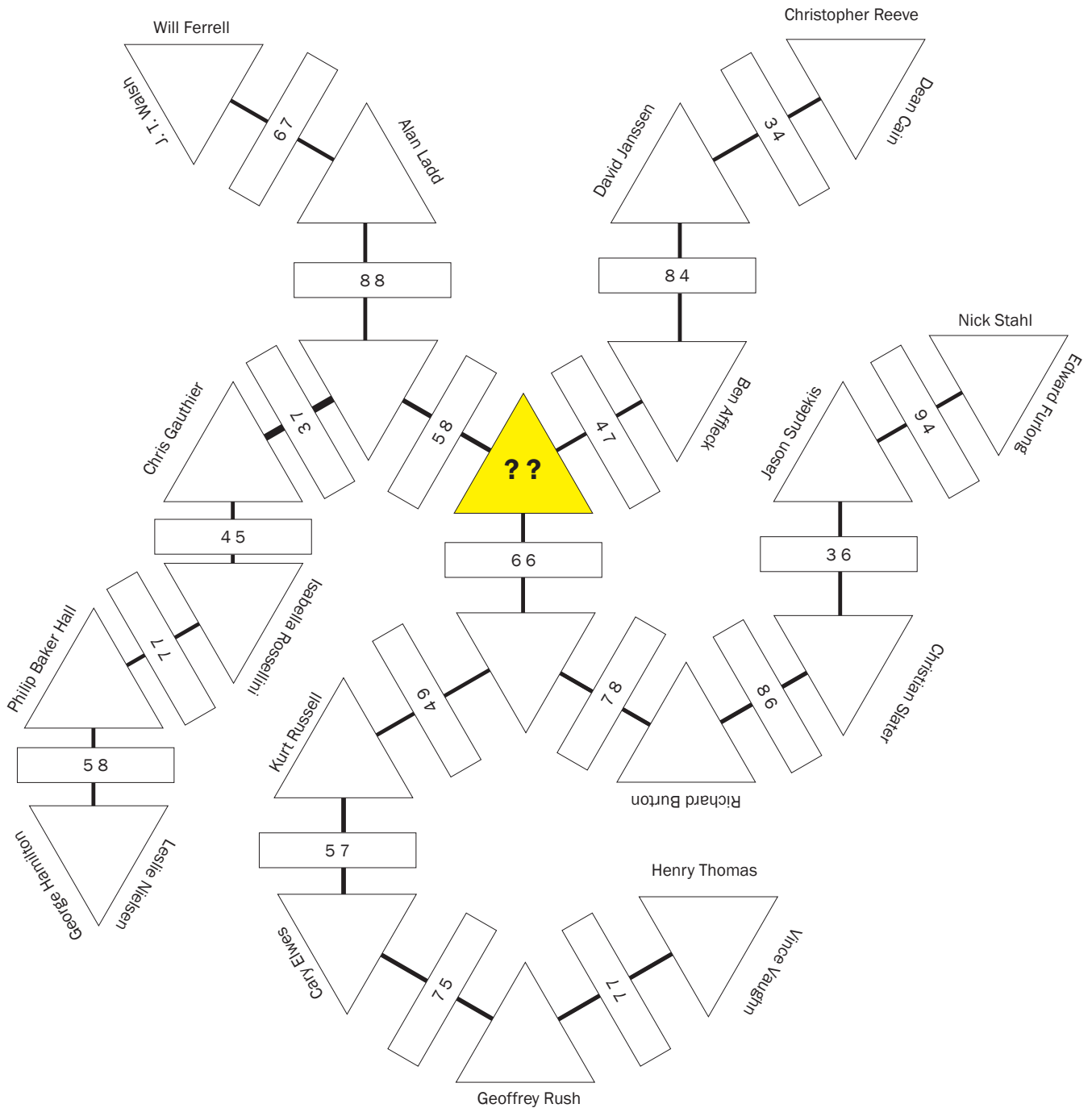
 51 110 22 78 59 117 134 95 147 159</p> <p>U. Album by The Killers

 19 167 141 88 32 55 86</p> <p>V. Type of office our leader works out of

 14 166 72 93</p> |
|--|--|

Bermuda Triangles

All these shady characters look alike to me.



Berths

Once you've made your bed, maybe you track down an appropriate shellfish to eat. (Do I have to spell it out for you?)

Each bed, when properly assembled, will contain no repeated letters. The highlighted column will be in alphabetical order, from top to bottom. The W in EDGWR is not an error.

B	L	O	C	K

G	L	Y	P	H

T	A	S	E	R

D	E	A	T	H

P	A	T	H	S

B	G	U	I	M
---	---	---	---	---

B	R	F	L	U
---	---	---	---	---

C	T	J	S	H
---	---	---	---	---

C	X	P	W	J
---	---	---	---	---

F	D	Y	B	M
---	---	---	---	---

F	U	D	W	L
---	---	---	---	---

G	B	X	Q	W
---	---	---	---	---

H	J	G	N	X
---	---	---	---	---

I	S	A	O	F
---	---	---	---	---

J	L	E	Q	W
---	---	---	---	---

K	U	R	I	O
---	---	---	---	---

L	H	F	M	E
---	---	---	---	---

M	I	G	Q	V
---	---	---	---	---

M	Y	K	S	V
---	---	---	---	---

M	L	F	X	N
---	---	---	---	---

O	B	J	X	R
---	---	---	---	---

O	F	X	J	S
---	---	---	---	---

O	K	C	Q	Y
---	---	---	---	---

P	I	B	J	V
---	---	---	---	---

P	I	C	N	G
---	---	---	---	---

P	Q	E	C	K
---	---	---	---	---

P	R	X	O	B
---	---	---	---	---

P	U	D	V	W
---	---	---	---	---

Q	D	J	B	W
---	---	---	---	---

Q	O	G	I	N
---	---	---	---	---

Q	E	T	S	A
---	---	---	---	---

R	I	F	M	Y
---	---	---	---	---

S	A	M	K	Y
---	---	---	---	---

T	H	A	U	S
---	---	---	---	---

T	W	L	V	R
---	---	---	---	---

U	H	N	F	O
---	---	---	---	---

U	L	F	N	D
---	---	---	---	---

U	R	C	T	N
---	---	---	---	---

V	C	P	J	R
---	---	---	---	---

V	C	X	G	N
---	---	---	---	---

V	C	Y	K	Q
---	---	---	---	---

V	K	E	X	M
---	---	---	---	---

W	I	B	M	G
---	---	---	---	---

X	H	O	P	J
---	---	---	---	---

Y	K	W	V	D
---	---	---	---	---

K	E	N	Y	A

T	I	L	D	E

S	Q	U	A	T

H	A	Y	D	N

E	D	G	W	R

Houseboats

What material did you make yours out of?

AEROBIC	B	O	I	M	P	B	L	N	U	M	N	O	W	Z	T	H	H	A	T	Y	P	O	U	H	
ALCOTT	A	L	R	C	A	Y	A	P	R	V	V	O	L	Y	E	F	E	J	M	U	E	K	G	C	
ALIBI	R	O	U	A	I		S	E	R	C	N	O	P	A	C	L		U	S	G	I	E	N	S	
ARNO	O	E	T	R				J	H	O	T	R	L	L	A				R	D	N	U	H	U	
ASCII	C	L	V						I	Y	S	K	Y	P						R	A	Z	I	W	
BEATRIX	T	H								A	H	C	E								T	R	I	X	
BEBOP	X	A	M							E	S	U	O	H	R						U	T	T	O	N
BICKERED	D	E	L							B	S	E	L	D	O						E	L	I	S	K
BIKINI	D	Y	R							R	A	R	E	N	W						R	O	U	G	H
BILE	C	O	O	Y	B	C	N	S	U	G	Y	R	X	P	H	L	I	O	R	N	O	H	O	T	
BITWISE	X	U	A	U	S	L	E	S	S	T	S	E	I	S	D	E	N	R	E	N	A	G	H	T	
BLURT	Y	L	D	K	N	A	I	F	R	E	D	L	Y	T	R	F	I	H	S	E	I	E	U	E	
BOGGLE	P	E	F	G	A	I	V	A	Z	N	U	E	S	E	L	A	K	H	R	N	H	E	K	E	
BOLUS	T	N	V	T	E		P	Y	A	F	E	Q	R	R	T	B		O	V	U	R	B	M	U	
BOOBOO	A	N	A	Y				P	E	R	A	I	I	E	E				L	A	B	U	C	L	
BOOLEAN	T	O	U							I	R	U	X	U	L						E	S	T	D	I
BOSS	R	N								N	O	R	T								B	A	T	I	
BOSTON	G	A	P							I	U	M	A	N	L						O	U	T	T	E
BROGUE	R	F	F							A	I	R	G	A	B						T	W	I	S	E
BYTE	Y	O	L							T	B	L	E	L	O						A	G	E	U	S
CARTOONS	E	U	B	G	H	X	Z	S	D	H	Y	E	V	S	L	L	L	U	M	A	M	F	R	O	
CHASTEN	S	R	A	E	A	S	A	C	H	A	M	E	A	O	E	I	A	T	A	N	R	B	D	W	
CHEETOS	H	M	A	T	D	O	H	E	S	N	L	I	T	B	T	E	E	S	L	L	O	N	S	G	
CIRCLET																									
CITRONS																									
CLAUS																									
CLIQUES																									
CREST																									
CRIBBAGE																									
CRICKET																									
CUBA LIBRE																									
CUDGELS																									
DEADBEAT																									
DEAF																									
DEMOTES																									
EASES UP																									

- | | | | | | |
|----------|-------------|----------|--------------|----------|-------------|
| FABRIC | ICIEST | LOOSEST | OSLO | SCHOOL | TOSS |
| GENRE | INVINCIBLE | LULLABY | OVERUSE | SCOUT | TOULOUSE |
| GIRLIE | ISTHMI | LUXURIES | OWNER | SEZ YOU | TUBBIER |
| GLEEFUL | JADED | MAGOO | OYVEY | SHIRKING | UNISEX |
| GOLAN | JETSONS | MATTES | PAINT | SHOFAR | UPSET |
| GOOGLES | KEANO | MUDDER | PLAYSTATION | SHOOTER | VOLPE |
| GOOGOL | KIDD | MUSIC | POLLYANA | SIGIL | WIZARD |
| GRADS | KINKIEST | NO PLEA | POOL PARTY | SKIERS | WOODBOROUGH |
| GROAN | KIRIBATI | NOSH | RABBI | SKYPED | WORDPLAY |
| GROVEL | LADDER | OBELISK | RESET BUTTON | SLEEP | XORN |
| HAZEL | LAMBIC | OBOES | REVOLT | SLUGGO | YOLO |
| HEADS | LAST SEASON | OODLES | REWORK | SONNETS | ZELDA |
| HOUSESAT | LOG OFF | OPERA | RIBBIT | SPANDEX | ZLOTYS |
| HUNDRED | LOMAX | ORANGES | ROBBED | STUBBS | |
| IAMBS | LONGTERM | OSAKA | ROBOT | THE HULK | |

Join the Navy

To join the navy, you must adapt all in a consistent manner.

EX

- Pestered or irked ___ _ ○ ○ ___
- Are comprised of ___ ○ ○ ___
- Jodie Foster alien movie ___ _ ○ ○ ___
- Wanted intensely ___ _ ○ ○ ___
- Establishes through logic ___ _ ○ ○ ___
- Walk all over ○ ○ ___

Nonconformist parts: AC IR NS OY TR UC

??

- Like a spur-of-the-moment purchase ___ _ ○ ○ ___
- Imbecillic or stupid _ ○ ○ ___
- Pretty as a _____ _ ○ ○ ___
- Takes account of ___ _ ○ ○ ___
- Additional or extra ___ _ ○ ○ ___
- Lacking; sans _ ○ ○ ___

CK IC IT LU OR UL

??

- Walking along slowly ○ ○ ___
- Famed New Orleans street ___ _ ○ ○ ___
- Frugal shoppers clip these ___ _ ○ ○ ___
- *The Importance of Being* _____ ___ _ ○ ○ ___
- Enters as enemy armies would ___ _ ○ ○ ___
- Hollywood magazine ___ _ ○ ○ ___

AM BO IE PO RN VA

??

- "Rapper's _____" ___ _ ○ ○ ___
- Hash over; talk about ___ _ ○ ○ ___
- A lengthy talk session ___ _ ○ ○ ___
- Says incoherently ___ _ ○ ○ ___
- Computer display ___ _ ○ ○ ___
- Move like a snake ___ _ ○ ○ ___

BF BL CU GH OU TH

??

- Most lacking in hair ___ _ ○ ○ ___
- Farm building for bovines ___ _ ○ ○ ___
- Gives knowledge to ___ _ ○ ○ ___
- It goes from your mouth to the esophagus ___ _ ○ ○ ___
- What reporters don't divulge ___ _ ○ ○ ___
- _____ and lightning ○ ○ ___

DE OW RT RY TH UR

??

- "_____! Here I come!" ___ _ ○ ○ ___
- They defend the net in hockey ___ _ ○ ○ ___
- Thankless person ___ _ ○ ○ ___
- Wrist cuff ___ _ ○ ○ ___
- Teachers/advisors ___ _ ○ ○ ___
- Asian hunting dogs ___ _ ○ ○ ___

CL KI LI NG NG NT

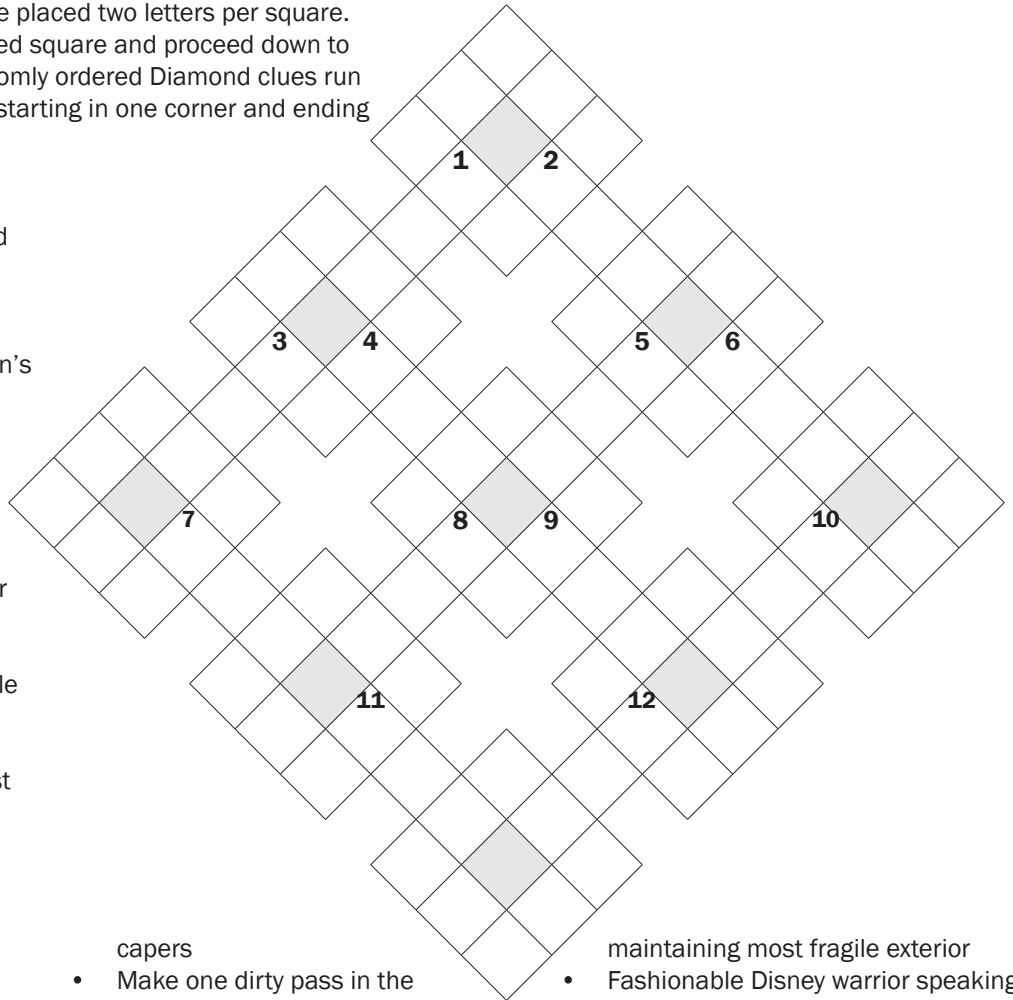
Le Coeur de la Mer

Oops...I dropped something. I think it went straight down to the bottom.

All answers are six-letters long and are placed two letters per square. Connection clues start in the numbered square and proceed down to the left or down to the right. The randomly ordered Diamond clues run clockwise around each 3x3 diamond starting in one corner and ending in the next.

Connections

1. Child throwing away one damaged guitar...right
2. Homicidal brother seizing mother reptile
3. Rich people acquiring, initially, lion's shares
4. Here's what you win: Damaged zippers with middle missing
5. Form of adhesive made from ground up clover
6. Part of New York royalty
7. Actor Richard as disturbed canner
8. Mozart fulfilled, in part, with skill
9. Mangled one paw, arm
10. It's at the end of a hose...no puzzle that stinks...not?
11. Stone in one sign
12. One engaged in money having lost a third



Diamond Perimeters

- | | | |
|---|--|--|
| <ul style="list-style-type: none"> • Monday sounds horrible for energetic one • Like charts about rice, perhaps • Stop prison cell movement short • Starting over to simply be discriminatory against women • Most ancestral land conceals position • I'd call, for fear of being the most lazy • Nothing is held forth by general and me in a kind of sequence • In partitioned train, getting nervous (2 wds) • Powers it with someone new, naive on the surface • Piece of plastic fuse is quintessential segment • Sends place carrying beer returns • You and I in one home that's most modern • Those hundred cretins hiding something not publicly known • Avoid pieces of anchovies and | <ul style="list-style-type: none"> capers • Make one dirty pass in the mountains • Agree to use a credit card near east Delaware • Work in electrical engineering to make plastic star • Red dancer is to encompass part • Walk off driest burn • Cover over time end part of a meteor shower • Endlessly begging off introduction • Minced sticky dates and a little yogurt...it's consistent • Consume substance...it's for laughs, it's said • One princess who's crazy destroyed an iMac • Mysterious game is in puzzle • Centaur covered in cold and hot metal • Confused by priest's liveliness • Make it so that you can't hear Dean | <ul style="list-style-type: none"> maintaining most fragile exterior • Fashionable Disney warrior speaking in French windmill • Part with a caravan follower somewhere in New York • Confusing sensei being clever (2 wds) • Give money, quality and time to Tangled Vines at first • Really good with person or people at school • Fuels the fire with short cooler puffs • University endowed richest youth, mostly • Read through each guys function |
|---|--|--|

Dropping Straight Down

- ??????
- ????:???????
- ??????????
- ??????????
- ????????

Message in a Bottle

Hmmm...I wonder where its from?

LERMONAT TROTOON WATOAT
AXHLIAF ARLCYAG EECBQU

SENGHYAN HOUSTAN NIXA HANSGIHA
UNWAH JIGBENI GGKHOON THANNAGS

ABICH ONAGNA MARSHOHII
AASKO DASENI

IMCIRKLE NHNOANS
ALYGAW REAPYTRIP

NEGHT ARPNWET GUBERS
NODETS LEGEI SSSRUBLE

TORSLIB ONOTBL SEDEL WORSNID
HABT CLUESTOGRE VORELLIPO
OLDONN CRYTOENV

COFRLEEN NAVORE LEPSAN
UNTIR CINEEV MOPELAR

THISCARTAM MAHARLE SMARTMADE
ELERAM TARREDMOT CHURTET

ZEALATROF OLVORTOPHE OLASVADR
LAPSUOOA MUSNAA BAILAIRS

RHOBAT UNBROLEEM THREP INESABBR
SEYDYN DALAIDEE FARFOROBSCHU

DOUGRAN RAMIED ANZOAPP QOTERAUER
JANUIAT DASNENAE GLONEAS BLEUAP

KLEASS NEIRBL GRABHUM
RESEND HMIUCN

Naval Barricade

Barricades are useful mostly for identifying mysterious cargo. What's on the boat?

3	2	2	2	4	0	1	0	0	6	
										1
										6
										1
										0
										3
										0
										1
										2
										3
										3

Battleship

Destroyer

Patrol

Submarine

?	3	3	3		1	3		?	?
		?				?		2	
2	2		?	2		3			
		1	2		?	3			
?				2	3		3	?	1
	2	0	?	?	3			2	?
?		?	0		2	2	3		
		3					?		
1			3			0	3	2	
		2			?	3	?		

Naval Barricade

Form a single-loop barricade that never crosses itself. Numbers represent the number of segments of the barricade that border that square. Copy over the ships in the Battleship puzzle; they must fall completely within the barricade.

Navigation

Which way did he go? Let's start by going north.

Puzzle #1

NW: Brit's pen
NE: Gets some sun
SE: Kind of tag (abbr.)
SW: Kirk fought one in "Arena"

- They are passed in relays
- More blocky
- Make illegal
- The F in TGIF
- Gloria of "I Will Survive"
- Goes around in a circle
- Like most bodybuilders
- Houston football team

Puzzle #5

NW: Ado or commotion
NE: Got to third, perhaps
SE: Word before estate
SW: Deliberately avoid

- New Jersey hockey team
- Chases relentlessly
- Madagascar, e.g.
- Unpleasant experience
- Make someone suffer
- Expose
- *Blithe* _____
- Educates

Puzzle #2

NW: Golfer's pegs
NE: Level
SE: Actress Cameron
SW: Take a moment

- Authoritative request
- Places to sleep
- Accompany on a date
- Mortar companion
- Kind of hit or word score
- D&D class
- Author
- Common set of signs

Puzzle #3

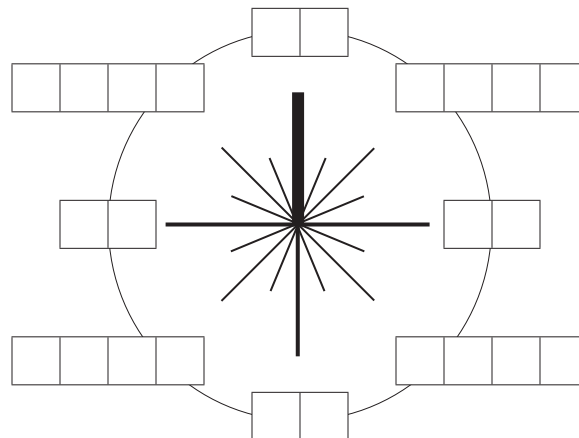
NW: *The Thin Man* dog
NE: Tibetan priest
SE: Relax and enjoy
SW: Medicinal amount

- Lacking ethics
- Heart vessels
- Kind of fir
- Intense fires
- Groups of 12
- Coated in ash
- Part of a poem
- Fanatical believer

Puzzle #4

NW: Thailand, once
NE: Word before man or street
SE: Tool for collecting leaves
SW: Staffs a position, chauvinistically

- Large groups of soldiers
- Weird and strange
- "A day that will live in _____"
- Common martial art
- Devilfish
- _____ Corps
- Inuit boats
- Expose à la Scooby Doo



Puzzle #8

NW: Inactive
NE: Element Fe
SE: Comedian Bob
SW: Très _____

- Mitt Romney had one full of women
- One going on a spree
- More skeletal
- Personal assistant
- They have no shots
- *Friends* character
- Enigmatic question
- Beamed

Puzzle #6

NW: Fog, of sorts
NE: Cry weakly
SE: Christmas song
SW: Goes bad

- "The Raven" figure
- Part of a hose
- Cause a lot of problems for
- Common word on this page
- List of attendees
- *Get* _____
- Workplace with anvils
- Symbol of disgrace
- Make less dangerous
- *Wrack and Ruin* author
- Samuel Wilson
- Having dropped
- Melted substance
- Seagoing rogue
- Like justice, at times
- Burned on the surface

Puzzle #7

NW: An acorn, e.g.
NE: Painter Mondrian
SE: Custard-like dessert
SW: Finished, over

Provisions

I love a good cruise ship buffet, and I always make sure I get something from each station.

Meat	<p>AI AN AS AY BD CI EA EB EE EH EI EN GE KE MA NG NG NS RO RO SA SH SL TE TT US YL</p>	Sides
	<p>AD AG AM AT AW BU CE CH FR GC IN IS KS LE LI LL NS NT OL OM OM OW RA SA ST UR YL</p>	
Desserts	<p>AR BO CH DE EC EO GO HA HE IA IC KY LE LI NI ON OO PO RE RM RS RY SH TH UN VA ZM</p>	Seafood
	<p>AD AL AN AR AW CL GR HA HI IV KH LA LT MA MI MP MU MY NT RT ST TE TH TR TT UC UE</p>	

1. What folk singer is widely believed to be “the jester” referred to in the song “American Pie?” (2 wds)
2. The Great Cornholio can often be seen hanging around what other animated character? (hyph.)
3. The video game *Lollipop* _____ is set at San Romero High.
4. What was Buster Crabbe's real first name?
5. Funding deliberately set aside for a specific project is often called pork barrel politics; others might just see it as what body-part based name?
6. In what city is L. L. Bean headquartered?
7. What is the last name of the actors who portray *You Don't Know Jack's* Cookie Masterson and Nate Shapiro?
8. She was Hasty Pudding Theater's Woman of the Year in 2010 (the year she also co-hosted the Oscars).
9. Complete the Guns N' Roses album title: *The Spaghetti* _____?
10. This state produces Wild Turkey bourbon.
11. Who issued the fatwa on Salman Rushdie for his book *The Satanic Verses*?
12. Warren E. Burger joined the Supreme Court immediately after which landmark appointment?
13. Oyster, Giant Puffball, and Shaggy Mane are all types of what?
14. What's upon your face, according to the English translation of “O Sole Mio”? (3 wds)
15. In “I Yam What I Yam,” who heroically rows the main characters to shore? (2 wds)
16. Anne Rice wrote both *Exit to Eden* and *Belinda* under the pseudonym Anne what?
17. Albert Broccoli co-produced many of the Bond films with Harry who?
18. What criminal organization is headed up by M. Bison?
19. He's Sterling to Hamm's Draper.
20. Kilgore Trout was based on what fish-named author and friend of Kurt Vonnegut, Jr.?
21. The earliest known instance of unsolicited commercial messaging (referred to today as spam) was a what detailing the hours of a dentist?
22. Ballerina Anna Pavlova passed away in what European capital at the young age of 49? (2 wds)
23. This shape appears in the logo for Bass beer.
24. What is Buddy's last name on the reality TV show *Cake Boss*?

Surf the Web

Careful...it's some pretty choppy waters to surf through.

<http://www.ooh-ooh.com/sexy/imagination/oddson/hairstyle3.gif>

<http://www.romantic-mysteries.com/milkman/is/lately/near2.ihtml>

<http://www.knights-errant.com/heroic/sunset/tube/pound5.rss>

<http://www.giga-yacht.com/passionate/taxisfor/orbital/imfreezing6.swf>

<http://www.nasty-nicotine.com/oil/dispensation/smoke/negative2.txt>

<http://www.labor-saving.com/rebuild/moon/transports/that5.htm>

<http://www.quasi-yahoo.com/excitedly/atomic/nobelium/missle3.css>

<http://www.six-shooter.com/bolero/hedonic/wheel/elected3.xhtml>

<http://www.box-office.com/randomly/numb/evilversion/lessthan9.php>

<http://www.apple-carts.com/outfarm/brain/router/mother6.dtd>

<http://www.chin-up.com/minimal/four/crew/gymclass1.jsp>

<http://www.high-class.com/disgusting/tornadojar/cases/thatstoobad5.png>

<http://www.far-right.com/friendly/mastoid/laughed/consequently7.cfm>

<http://www.extra-terrestrial.com/midsummers/hero/come/thing2.cgi>

<http://www.do-nothing.com/issuers/blackberries/barrels/exist5.xml>

<http://www.jim-dandy.com/said/unethical/phrase/doctor4.pl>

<http://www.pince-nez.com/malaria/physique/probated/senior4.asp>

<http://www.itinerant-outlaws.com/hire/mammalian/bandit/hatchet4.jpeg>

<http://www.me-you.com/next/linear/eurasia/whatever4.html>

Swashbucklers

Hey, easy with that sword.

Across

1. Famed swashbuckler (with 84-Across)
6. He won in Orchomenos
11. Like a crown
16. ___ Apso
17. Garlic mayonnaise
18. Overact
19. Thwarts
20. Burns often had one
21. Nail infection
22. Progress
24. Pakistani province (DINS anag.)
25. Hundred-eyed giant (var.)
26. Born
27. Needlefish
29. Artificial hormone
31. Adds to the pot
33. Heart and ___
34. Starbucks necessity
38. Before laundry
43. A long way off
44. Make clear, in a way
46. Al ___
47. Actress Delaney and others
49. Lena Dunham show
51. Attack (2 wds)
52. Start to burn something
54. Boxing venue
56. Evil
57. Periods of great productivity
59. Fractional portions (hyph.)
61. Squad
63. Twangy
64. Stopping necessity (2 wds)
69. Lock and ___
70. Coppertone abbr.
73. Rejuvenating site
74. Soon, to a poet
76. They turn litmus paper blue
78. Raccoon relative
79. Pass again in a race
81. ___ front (2 wds)
82. Funnel-shaped
83. Come up
84. See 1-Across
85. Remove chalk
86. Corn chip
87. People from Ankara

Down

1. Small and petite
2. Major French river

1	2	3	4	5		6	7	8	9	10		11	12	13	14	15	
16							17						18				
19							20						21				
22						23		24					25				
26				27		28		29				30					
				31				32		33							
34	35	36						37		38				39	40	41	42
43						44				45		46					
47				48		49				50		51					
52						53		54				55		56			
57								58		59				60			
						61				62		63					
64	65	66	67					68		69					70	71	72
73								74		75		76		77			
78								79				80		81			
82								83						84			
85								86						87			

3. African country
4. Capital of Norway
5. Pasta option
6. Egg ___
7. Heavy duty weapons
8. Kind of puzzle
9. Extensive grassy plains
10. Delivery from a plane (hyph.)
11. Markup artists?
12. Muslim leaders
13. One of the Muppets
14. Worried (2 wds)
15. Rental agreement
23. Out of style
28. Adjust a cribbage board, again?
30. Short grass
31. Terrified
32. Capital of Bulgaria
34. Spanish port city
35. Adult (2 wds)
36. ___ Brice
37. Famed swashbuckler role
39. Boll ___
40. Buzzing
41. Reprimand
42. Areas
45. Miller or Close
48. Not abroad
50. Move quietly
53. Peepers
55. Confounded (2 wds)
58. Desert-like
60. Part of a barn
62. Kingdom of unicellular organisms
64. Italian lawn bowling
65. Shaver's need
66. Yoga posture
67. They can get high on a windy day
68. Ancient Greek dialect
70. Woodland deity
71. Make a tinkling sound
72. Pori people
75. ___ Bridges
77. It follows Yankee
80. Kind of dispenser

Yet Another Boston Tea Party Puzzle

No matter what stretch of blue we sail along, it always seems like we start with Boston.

<p>Apple Wi-fi product that debuted May 10, 1999 (7)</p> <p>Replace vowel with an E.</p>	<p><i>The House of the Spirits</i> author Isabel (7)</p> <p>Add E after last consonant.</p>	<p>A larger version of a fish bowl that often has plant life as well (8)</p> <p>Reverse.</p>
<p>Satirical spy Powers portrayed by Mike Myers (6)</p> <p>Make last letter D.</p>	<p>Burger, Bankjob, Bouncer, Baggy or Babyface...or Snoopy (6)</p> <p>Replace first letter with CL.</p>	<p>Friend to Dorothy, Rose and Sophia on <i>The Golden Girls</i> (7)</p> <p>Delete first letter.</p>
<p>Red Sox slugger Wade (5)</p> <p>Add space after 1st letter.</p>	<p>He talks with Casca in Act I, Scene III of <i>Julius Caesar</i> (6)</p> <p>Move first letter to fourth position.</p>	<p>Fourth Vice President, 42nd President, or 1812 election loser</p> <p>Move fourth letter to end.</p>
<p>Lisa played her on <i>The Cosby Show</i> and <i>A Different World</i> (6)</p> <p>Replace first vowel with an I.</p>	<p>Mathematical operation indicated by a slash or an obelus (8)</p> <p>Add U after every O.</p>	<p>Second largest city in Alaska, after Anchorage (9)</p> <p>Replace last letter with an E.</p>
<p>Tire company founded in the same town as its archrival Goodyear (9)</p> <p>Add E after last consonant.</p>	<p>Actress Henderson of <i>The Brady Bunch</i> and <i>The Surreal Life</i> (8)</p> <p>Delete first letter.</p>	<p>2004 Viggo Mortensen film named for a horse (7)</p> <p>Replace all vowels with a U.</p>
<p>Nickname for Pete Mitchell (8)</p> <p>Delete last 3 letters.</p>	<p>Another word for country (6)</p> <p>Delete first letter.</p>	<p>The N in SNAFU (6)</p> <p>Replace first letter with CL.</p>
<p>Famed dictionary + Entertainment featuring clowns (6 6)</p> <p>Replace the first consonant with an A.</p>	<p>____ de gallo (4)</p> <p>Replace all vowels with a U.</p>	<p>Baltimore, Maryland racetrack (7)</p> <p>Replace the second vowel with an F.</p>
<p>Seat of Roosevelt County, New Mexico (8)</p> <p>Delete word meaning "amaze."</p>	<p>Jazz singer Vaughan (5)</p> <p>Add E after last consonant.</p>	<p>It includes Vassar and Radcliffe (5 7)</p> <p>Delete the third letter.</p>
<p>TV series with episodes "It Hits the Fan" and "Broadway Bro Down" (5 4)</p> <p>Delete third, fourth, and fifth letters.</p>	<p>Tsaritsyn -> ???? -> Volgograd (10)</p> <p>Delete first letter.</p>	<p>Actor Dean from <i>Quantum Leap</i> (9)</p> <p>Replace the second vowel with an E.</p>
<p>Mount near Alexandria, Virginia (6)</p> <p>Move last half of word to front.</p>	<p>Author of <i>Les Miserables</i> (6 4)</p> <p>Delete first letter.</p>	<p>Victor/____ (8)</p> <p>Replace the second consonant with an R.</p>
<p><i>Batman's</i> Burt + Opposite of high (7)</p> <p>Move last forward 2 in alphabet.</p>	<p>Title character whose last name is Ufgood + a word for river (11)</p> <p>Move third letter to end.</p>	<p>What John Mayer says your body is, with a (10)</p> <p>Add an X after the first vowel.</p>

■ Answers: Mr. Fox and the Sour Wines

Created When?

Each pair of events indicate a specific date.

- October 10, 1984
- October 9, 1992
- November 9, 1972
- October 18, 1974
- April 2, 1968
- August 20, 1982
- December 14, 1979
- November 13, 2009
- May 20, 2004

Figure out the age of the given celebrity and what number the ??? represents.

- Sweets Edison is 69 (23)
- Sharon Osbourne is 40 (8)
- Big Pun is 1 (1)
- Arliss Howard is 20 (20)
- Dr. Demento is 27 (13)
- Ron Paul is 47 (15)
- Spike Jones is 88 (22)
- Whoopi Goldberg is 54 (9)
- Bronson Pinchot is 45 (5)

The ??? numbers spell WHAT MOVIE. Each date is the premiere date of (among other movies) a movie that contains a year in the title. ABCD refers to the digits of the year.

- 1984 (AD=14)
- 1492: Conquest of Paradise (C=9)
- 1776 (B+C=14)
- Airport 1975 (D=5)
- 2001: A Space Odyssey (AC=20)
- Class of 1984 (A+C=9)
- 1941 (C+D=5)
- 2012 (DB=20)
- 2046 (A+D=8)

The answer is **NINETIETH**.

Knight Cellars

Place the blocks into the grid so that it is possible to spell out a homophone of the word given (not necessarily consecutively). Highlighting down answers yields Braille that spells "THE PINK PANTHER ACTOR PETER". The answer is **SELLERS**.

K	R	C	N	S	O	C	S	T	F	P	Q
A	I	O	F	U	D	A	N	W	I	X	U
U	D	I	S	C	U	L	S	S	E	R	D
R	G	M	A	I	N	E	Y	U	L	I	S
C	H	P	A	S	T	E	M	R	O	N	I
I	C	L	O	U	N	N	C	E	I	L	S
C	B	E	R	Z	A	D	B	I	C	C	D
C	T	M	Z	E	N	S	E	C	K	R	R
P	O	E	T	P	O	U	R	K	R	I	I
L	R	N	E	E	O	A	O	S	D	P	S
E	E	T	N	O	O	E	L	D	S	L	E
S	C	S	O	L	O	R	N	E	L	E	S

Twisted Lovers Vineyards

In each, a trivia question or clue has been transformed according to a specific rule.

- Ned or Warren: BEATTY (Add AT around last letter)
- Queen in Enchanted: NARISSA (add H after second letter)
- Metric unit of mass: GRAM (Advance 1st letter forward 1)
- Numeric commercial book identifier: ISBN (change 2nd letter to Y)
- Author Umberto: ECO (Insert a C after the 3rd letter, change last letter to US)
- Called for a taxi: HAILED (change first letter to S)
- Shirley Jackson short story, with The: LOTTERY (change 3rd letter to R)
- Purple soft round fruit: DAMSON (Reverse, insert an L)
- Blues Brothers correctional center: JOLIET (Delete 4th letter)
- City where Coneheads is set: PARAMUS (TH+word, make last letter E)
- Container used for mailing a letter: ENVELOPE (Add O to front, change R to Y, reverse any pair of vowels)
- Ruth Crowley was this Ann: LANDERS (change last letter to O)
- Seven Against what Greek city: THEBES (Move the fourth letter ahead one letter)
- Group of peers in court: JURY (delete 1st letter)
- Rice-shaped pasta known in Greek cuisine: Swap E and S, and W and N)
- Pyle portrayed by Jim Nabors: GOMER (reverse word, add E to the end)
- George commonly known for zombie movies: ROMERO (change O to U)
- Popular shark horror movie: JAWS (change O to A, insert between state abbreviation)
- Whimsical writer Theodore Geisel: DR. SEUSS (3rd letter to 1st, move back in the alphabet 6 spaces)
- Everyone complains about this: WEATHER (delete last two letters)
- Greek counterpart to Juno: Delete last letter, add E after 1st
- Lawrence Fishburne in The Matrix: MORPHEUS (delete first letter, add E to front, game piece to end)
- Street Fighter video game soldier: GUILLE (Replace first letter with weapon)
- One-armed bandit blank machine: SLOT (Replace 4th letter to a negative)

Trying to apply the transformation to the answer yields garbage. However, each transformation can

be applied to another question to yield one of a pair of lovers, and vice versa (e.g., the first question, THEBES, can use BEATTY's transformation to get THE BEAST, and vice versa will get BEAUTY).

- BEAUTY and THE BEAST (1 and 13)
- ECHO and NARCISSUS (2 and 5)
- HOMER and MARGE (3 and 16)
- PYRAMUS and THISBE (4 and 10)
- SAMSON and DELILAH (6 and 8)
- WERTHER and LOTTE (7 and 20)
- ROMEO and JULIET (9 and 17)
- ODYSSEUS and PENELOPE (11 and 19)
- HERO and LEANDER (12 and 21)
- ORPHEUS and EURYDICE (14 and 22)
- TARZAN and JANE (15 and 18)
- LANCELOT and GUINEVERE (23 and 24)

Take the Nth letter of each transformed answer and swap the positions of each pair. This will give you THE ANSWER IS REENGINEERING.

Two Geniuses Blends

The first list of clues suggests the names of various emporiums, where the last syllable is repeated.

- Christie's Tees
- Baldwin's Wins
- Hepburn's Burns
- Applegates' Gates
- Eastwood's Woods
- Hasselback's Backs
- Clooney's Knees
- Lockhart's Hearts
- Sorbo's Bows
- Ritchie's Cheese
- Hilton's Tins
- Swayze's Zees
- Oswald's Waltz
- Dreyfuss's Fusses
- Shakespeares' Spears

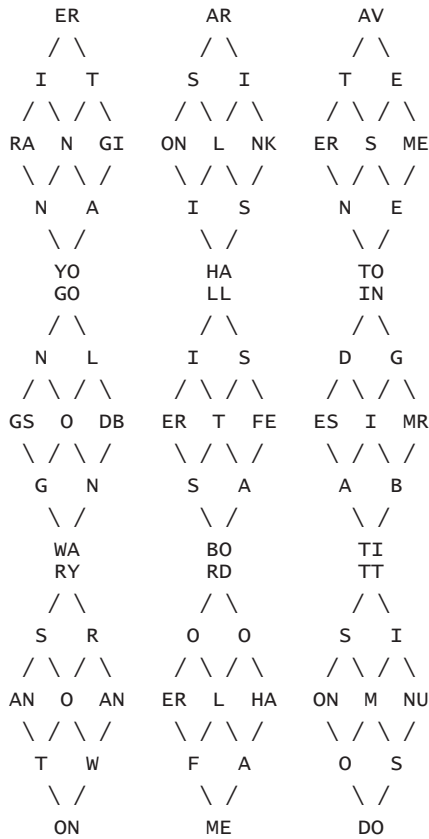
Each of the clues in the second list clues the non-repeated portion of each celebrities last name with a number N. Take the Nth letter of the celebrities' first name,

- Kris (Agatha=A)
- East (Clint=N)
- Hassle (Elisabeth=S)
- Shakes (William=W)
- Bald (Alec=E)
- Hep (Audrey=R)
- Sore (Kevin=E)
- Sway (Patrick=I)
- Writ (Lionel=N)
- Apple (Christina=S)
- Loch (Keith=T)
- Clue (George=E)
- Dry (Richard=I)
- Oz (Patton=N)
- Hill (Paris=S)

The answer is **EINSTEINS**.

Four Diamonds

In each diamond, the clues yield 5-letter words. Black clues go clockwise, red counterclockwise, and two letters go into each corner.



The corners of each set of diamonds spells the name of a baseball Hall of Famer, minus one letter.

- Yogi Berra (B)
- Hank Aaron (A)
- Tom Seaver (S)
- Wade Boggs (E)
- Bob Feller (B)
- Tim Lincecum (A)
- Nolan Ryan (L)
- Mel Harder (L)
- Don Sutton (S)

The answer is **BASEBALLS**.

Pathways to Excellence

Complete the relatively easy numberlink. Each picture is that of an artist known for a song "Walking..." or "Walk..." The enumeration provided gives the last portion of the song title.

- Marc Coen ("Walking in Memphis")
- Annie Lennox ("Walking on Broken Glass")
- The Bangles ("Walk Like An Egyptian")
- Smashmouth ("Walking on the Sun")
- Dewey Cox ("Walk Hard")
- Katrina and the Waves ("Walking on Sunshine")
- Lou Reed ("Walk on the Wild Side")
- Johnny Cash ("I Walk the Line")
- Aerosmith ("Walk this Way")

Using the direct of the feet along each path, fill in the path with what they are walking on or like. The letters corresponding with feet spell out **EGGSHELLS**.

Secret Valley Winery

First grid: weasel, otter, beaver, skunk, ermine (forest critters)

Second grid: Aquafresh, gym socks, Cuban flag, prisoners, Yankee (things with stripes)

Third grid: Nitrogen, silver, sulfur, oxygen, tungsten (elements)

Fourth grid: cheddar, havarti, provolone, American, limburger (cheese)

Fifth grid: cabbage, simoleons, smackers, peanuts, dough (slang for money)

In each case, one of the items is known as having a particularly foul odor. These can be copied into the last grid, each filling exactly one square:

CA	MB	SO	GE	UR
G	K	U	F	R
S	B	L	N	K
S	U	B	C	E
LI	YM	UR	AG	KS

In the last grid, adjust each single letter by the number in that square, giving **ANTIPERSPIRANTS**.

Revolutionary Wines

Each clue must be reordered before solving. Each answer has the same number of letters as the number of words in the clue, and must be reordered the same way.

- Paul McCartney's post Beatles band (WINGS)
- The elephant that heard a who (HORTON)
- Two Steves founded this company (APPLE)
- British term for a flashlight (TORCH)
- Animal that really enjoys bamboo (PANDA)
- Being that wears a halo (ANGEL)
- Organization meaning "table" in Latin (MENSA)
- Prize money in horse racing (PURSE)
- Stage name for Kejuan Muchita (HAVOC)
- It connects two points (LINE)
- Spooky or Great Lake homophone (EERIE)
- They are covered in enamel (TEETH)
- A Doll's House playwright Henrik (IBSEN)
- Fill up a Thanksgiving turkey (STUFF)
- Official written agreement between two countries (TREATY)
- US labor leader who disappeared (HOFFA)
- Rapper born Tracy Morrow (ICE-T)
- Doctor Who character River (SONG)

s	m	E	m	p	h	w	r	b	s	s	a
i	i	t	p	d	l	i	s	u	n	s	l
h	a	y	y	s	H	d	r	a	h	h	g
p	w	a	G	i	a	u	s	E	n	i	n
m	e	w	e	d	r	s	b	r	o	k	e
e	d	S	n	e	d	s	s	u	n	s	u
m	i	i	a	w	h	a	l	g	n	e	n
d	s	h	i	i	a	r	d	h	a	k	S
l	e	t	t	L	n	e	l	i	r	o	s
i	g	y	p	d	i	r	a	h	d	r	u
w	e	d	i	s	L	e	n	i	l	b	n
b	r	o	k	e	n	G	l	a	s	s	s

S. Large sheet of ice (FLOE)

T. Ceremony prescribed by religion (RITE)

U. "___ when I laugh" (ONLY)

V. Where money is made (MINT)

"Perhaps the sentiments contained in the following pages are not yet sufficiently fashionable to procure them general favor." First letters of the answers spell "What pamphlet is this from?" The answer is **COMMON SENSE**.

Spinning Leaf

- lakefront
- yellow flag
- afterlife
- Garfield
- malfeasance
- elevator shaft
- virtual office
- fiberglass
- justifiable
- classified
- unflattering
- soft-pedal
- zinfandel
- quarterfinals
- telefax
- peaceful
- needlecraft
- "Heal thyself"
- deflate
- waffles
- refusal
- influenza
- battle fatigue
- old fashioned

Each answer can be entered into one of the spaces in alphabetical order, skipping over K and X (both marked with "nothing"). The leafs always correspond with the letters L-E-A-F, each in a different order (e.g., AFTERLIFE->AELF). Translating each ordering of LEAF in the top string into letters gives "Jumping flea instrument" which clues the answer **UKULELE**.

Candelabra

- 9. NABS
- 13. BOOMS
- 14. ERR
- 27. NAP
- 28. ECHO
- 41. OOP
- 52. SELL
- 59. NOOR
- 60. SCAN
- 96. SHONE
- 100. CASH
- 118. CHOPS
- 143. UCLA
- 184. ROSE
- 229. SANE
- 354. LIB
- 385. CEL
- 448. CHOOSE
- 560. SCOURER
- 623. USER
- 755. SKA
- 879. RIM
- 1352. TOUR
- 1521. NIBS
- 1553. SULK
- 1764. RANGES
- 2834. TUSK
- 3397. SABE
- 3431. PURR
- 3443. LUCK
- 3542. PUCE
- 3612. TANG
- 3616. HOSE
- 5411. LURE
- 6832. TOSH
- 6860. CAUSE
- 7420. CASTE
- 12316. HASSLE
- 12656. SHOUTER
- 34216. HOSTEL

Using some math, one can determine that the words are (from left to right)

- NEON
- BEACON
- PHOSPHOROUS
- TORCH
- LAMPPOST
- SUN
- SEARCHLIGHT
- BLINKER
- LASERBEAM

On day 55440, the candles will show the word **ENSCONCES**.

Cotes du Snooty Frenchman

Left-hand Clues

femurs, Alpo, step, edition, clarinet, renovate, fanciest, luge, cudgel, coinvent, voters, moisture, Demi, scale, Tudor, seduce, bats, Gators, pore, wipers, rioter, generic, strife, saunter, Rome

Right-Hand Clues

The right-hand clues words that start with con and pro, but as the opposite (for example, the first clue clues the opposite of PROBATES).

conbates, proceal, concedures, procertina, procierge, proclude, concrustean, prodition, profiscate, confiteers, prograts, conlogue, conmised, conmoter, conphets, conposal, conpriotor, prosortium, conspero, prospire, prosumer, protour, protravene, proverts, Convincetown

Following the example in the flavortext, add one letter to the main portion if the word starts with PRO and subtract one letter to the main portion if the word starts with CON to get one of the answers on the left. (e.g., PROSUMER + F = FEMURS, CONPOSAL - S = ALPO). The PRO letters yield FELON GOES DOWN and the CON letters yield SHOWS RESPECT. The first clues, punnily, CONDESCENDS, and the other PRODESCENDS. The answer is **CONDESCENDS**.

Mr. Fox and the Sour Wines

The descriptions in Mr. Fox's wines compare each wine to a different liquid, each of which has a different pH number. (In some cases, multiple liquids used.) Each answer consists of pairs of letters and one additional letter.

pH	Answer	Extra letter
0	SELLERS	R
1	CONDESCENDS	O
2	EINSTEINS	T
3	EINSTEINS	T
4	ANTIPERSPIRANTS	E
5	REENGINEERING	N
6	INVENTIVE	T
7	CONDESCENDS	O
8	CATCALL	T
9	EGGSHELLS	H
10	BASEBALLS	E
11	COMMON SENSE	C
12	ENSCONCES	O
13	HORSESHOE	R
14	UKULELE	K

The extra letters spell **ROTTEN TO THE CORK**.

Grape Stompers

The grid contains non-overlapping nine-letter words formed by taking three grapes in a row. In 26 cases, the middle letter is incorrect. The correct letters run from A to Z, and the incorrect letters spell out *IDENTIFY THIS PIC NINE LETTERS*. Connecting the correct letters in order forms a **HORSESHOE**.

